



## **BRING TEAMS TOGETHER**

Increase the safety and productivity of work teams by eliminating communication barriers and providing access to multimedia sharing and workflows on smart devices, regardless of network or location.

**taii**  
communications

# tait TEAMUP SMART DEVICE APP

## BENEFITS



Field technicians can provide local context to remote engineers using video streaming.



Fire crews can monitor firefighter safety and performance using location information.



First responders can communicate with support staff equipped with smartphones.

### Connect Your Teams at the Push of a Button

Instantly enable Push-to-Talk communications between individuals and teams using smart devices and land mobile radios, regardless of network or location.

### Boost Collaboration and Keep Everyone Informed

Share real-time information with a contact or group via text messages, location pins, attached photos, videos, files or contacts, and live streaming video.

### Help Teams Work Faster and More Confidently

Turn recurring tasks into selectable templates that guide users through workflows and form submissions, speeding time to completion and reducing errors.

### BRING YOUR TEAMS TOGETHER

Overcome the communication and collaboration challenges your teams encounter when kept apart by technology. Tait TeamUp is a subscription-based smart device application that brings teams together by bridging the communications gap between networks, devices and user locations. Workers using broadband devices can communicate with other workers or land mobile radios, anywhere in the world.

### ALERT YOUR TEAM TO EMERGENCY SITUATIONS

Quickly signal dispatchers and team members when in distress. A one-button push sends an emergency call and message to identified contacts and groups, complete with caller and location information. Lone Worker routine check-ins, geographic boundary notifications, and Man Down capabilities automatically signal potential emergencies that may require a rapid response.

### SEE AND CAPTURE EVENTS AS THEY HAPPEN

Provide on-scene situational context to remote teams using a smart device's integrated camera. Share live video with a dispatcher, another user or group of users in a talkgroup, while still making and receiving calls. Videos recorded and photos captured are easily and securely shared as attachments.

### GET WORK FLOWING SMOOTHLY

Automate and digitize existing paper-based tasks, speed up approvals and reduce data errors by enabling your teams to access forms and manage processes using a broadband smart device. Set deadlines, assign priority status and automate approval requests, even within a workflow. Worker contact information, location, time and date can auto-populate form fields, reducing errors and creating an audit history of activity.

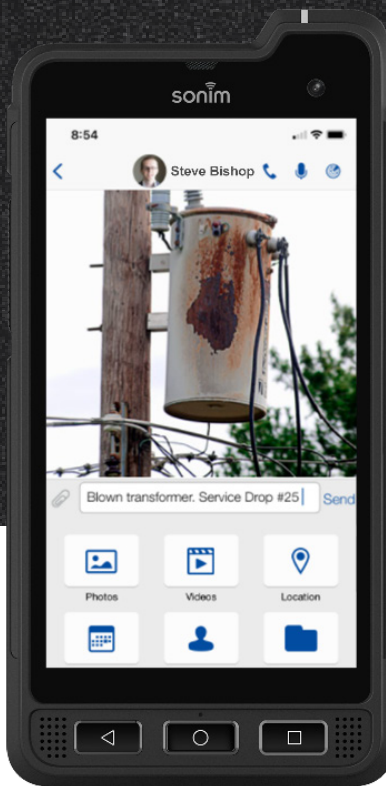
# tait TEAMUP SMART DEVICE APP

## FEATURES



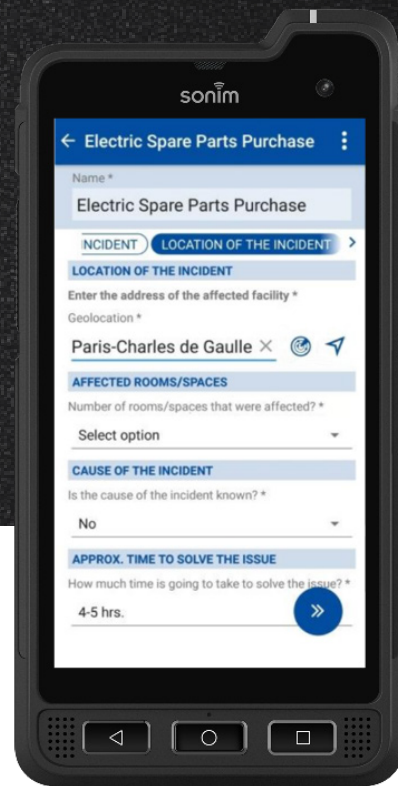
### COMMUNICATE

Keep conversations flowing between individuals and teams anywhere in the world using Push-to-Talk, VoIP, cellular, and video.



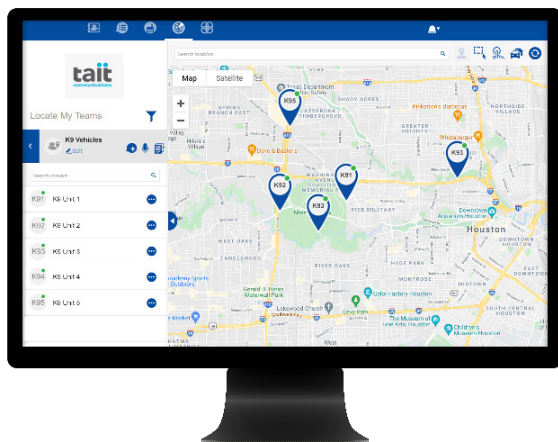
### COLLABORATE

Exchange real-time information with another user or group of users by sharing photos, videos, locations, contacts, calendar events and documents.



### CONDUCT BUSINESS

Provide teams access to forms or work instructions, like incident reports, from any smart device, and receive progress updates via real-time synchronization.



Bring teams together with an internet connection and Tait TeamUp running on desktop computers, ruggedized devices and consumer-grade smart devices.

# tait TEAMUP SMART DEVICE APP

## TECHNICAL SPECIFICATIONS

### CAPABILITIES

Tait TeamUp is a cloud-based smart device application that provides system administrators the flexibility of enabling or disabling features.

### Key Capabilities by Feature Group

<b>Calling</b>	Cellular	<b>Locating</b>	Location Sending
	Channel		Location Sharing
	Conference		Location Viewing
	Push-to-Talk Over Broadband	<b>Video</b>	Broadcast Video Calling
	Video		Video Conferencing
	VoIP	<b>Work Processing</b>	Autofill Form
	<b>Messaging</b>		Email
Text			Process History Recording
Voice			Process Scheduling
Photos			Start-Stop Activity Timer
Videos			Task Priority Assignment
Files			Workflow Status
Locations		<b>Interoperating</b>	Tait LMR Network Connectivity
Contacts			
Calendar Events	<b>COMPATIBILITIES</b>		
User Screen	<b>Rugged Devices from Tait</b>		
<b>Emergency Managing</b>	Emergency Calling	Sonim XP800, Ruggear RG360, RG530, RG725 with optional hardware PTT and Emergency Key assignment.	
	Emergency Caller Locator	<b>Smartphones</b>	
	Emergency Messaging	Most Android and iOS phones	
	Fallback to Emergency Cell Call		
	Lone Worker Protection		
	Positive Security		
Remote User Check			

Tait has taken every care in compiling this brochure, but we're always innovating and therefore changes to our models, designs, technical specifications, visuals and other information included in this brochure could occur. For the most up-to-date information and for a copy of our terms and conditions please visit our website [www.taitradio.com](http://www.taitradio.com).

The words "Tait", "TAIT AXIOM", and the "Tait" logo are trademarks of Tait International Limited.

Copyright © 2021 Tait International Limited Tait\_TeamUp\_Smart Device App\_v1